



## KLG-100100-18CU Product Datasheet

KLG-100100-18CU is a round 100mm wafer of Monolayer CVD graphene film, on 18 micron thick copper foil.

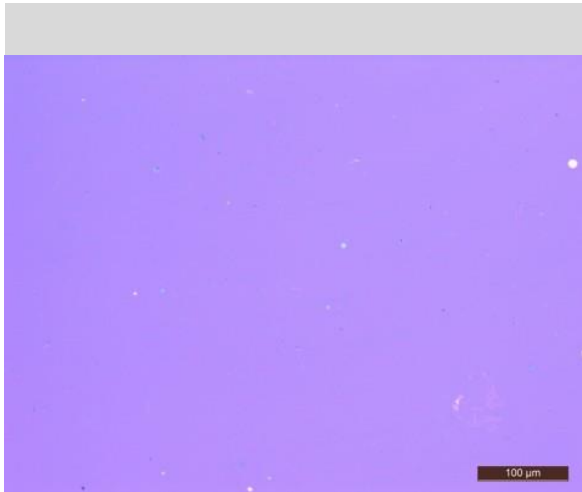
### Graphene Film

Growth Method	CVD
Transfer Method	Clean transfer
Quality Control	Raman and Optical Microscopy
Appearance (Color)	Transparent
Transparency	>97%
Appearance (Form)	Film
Coverage	>95%
Number of graphene layers	1
Thickness (theoretical)	0.345 nm
Grain size	Up to 10 $\mu\text{m}$

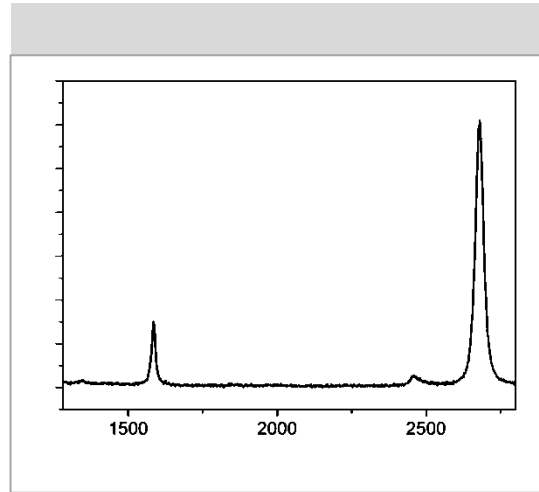
### Cu foil

Thickness	18 $\mu\text{m}$
Note:	The copper foil has been pretreated for easier bottom layer removal

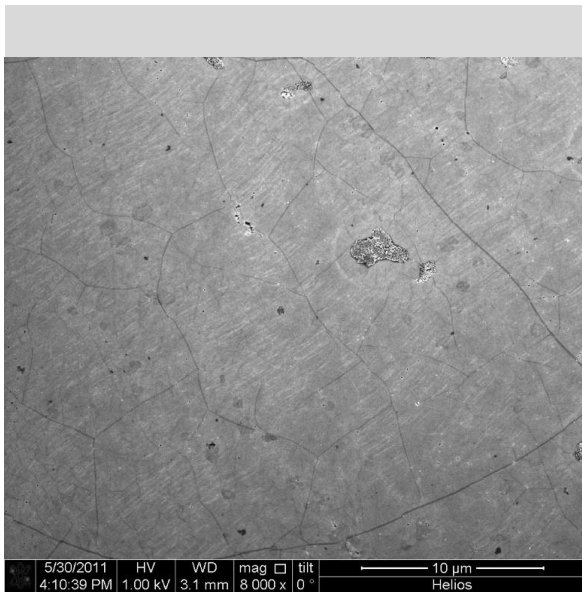
**Optical Microscopy**



**Raman Spectrum**



**SEM image**



**HRTEM image**

