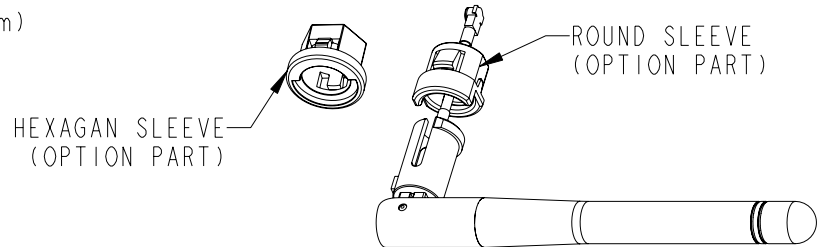


**APPROVED**


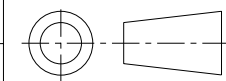
FREQUENCY RANGE	2.4-2.5GHz
IMPEDANCE	50 ohms
VSWR	<2.0:1



TOLERANCE (UNLESS STATED)	X = ±0.3 XX = ±0.13 ANGULAR = ± 30'	SYM	ECO/DESCRIPTION	DATE	CK	APP	 ANTENNA SBU PENANG, MALAYSIA	DRAWN BY: TL KHOO			
- PRODUCT & PROCESS MUST COMPLY TO LT-GES - MISSING INFORMATION REFER TO 3D DATA - DIMENSIONS ARE IN MILLIMETERS UNLESS STATED OTHERWISE - THIS DRAWING WAS GENERATED VIA PRO/ENGINEER - PRINT NOT TO SCALE	(F06)		ECO-00403	20/6/08	CHIN	GERALD		<small>CONFIDENTIAL</small> <small>THE INFORMATION CONTAINED IN THIS DOCUMENT IS OF PROPRIETARY NATURE. IT MAY NOT BE REPRODUCED OR USED WITHOUT EXPRESS WRITTEN PERMISSION OF LAIRD TECHNOLOGIES, ANTENNA SBU</small>	CHECKED BY: GJ CHIN	DWG. NO.: MAF95102	PG. 1/4
	(F07)		ECO-00428	07/08/08	KHOO	FONG					
	(F08)		ECO-00531	6/4/09	KHOO	CHIN	DESCRIPTION: REDANG SNAP IN MASTER PRINT, WRR SERIES	MATERIAL: N/A			
	(F09)		ECO-00556	28/7/09	KHOO	CHIN					
	(F10)		CRN #984	22/5/13	HANG	TEOH					
© 2007 LAIRD TECHNOLOGIES							PROJECT NO. R.TBL	DATE: 08/10/07	SCALE:	UNITS: MM	

No	FG NO.	Rev	Description	Project#	Lc/±5	Lfl	Connector Orientation	Connector part no.	Antenna Color	Sleeve	Ferrite Bead
1	MAF94049	C1	REDANG DIPOLE SNAP-IN (IPEX)	CWC0031	125	(20)	A	MAP30105	ST Black (PC30020)	NIL	MAP58006
2	MAF94065	C2	REDANG SINGLE-BAND SNAP-IN (IPEX)	CWC0031	130	(20)	A	MAP30105	ST Black (PC30020)	NIL	MAP58010
3	MAF94068	C1	REDANG DIPOLE SNAP-IN (IPEX)	CWC0031	65	(20)	A	MAP30105	ST Black (PC30020)	NIL	MAP58006
4	MAF94141	C1	REDANG SNAP IN SB (GREY)	CWC0112	130	(133)	A	MAP30105	DK Gray (PC30277)	MAP44035 ROUND SLEEVE	MAP58006
5	MAF94151	C1	REDANG SNAP IN SB (RAL9003 WHITE)	CWC0112	130	(133)	A	MAP30105	White (PC20053)	NIL	MAP58006
6	MAF94156	C1	REDANG SNAP IN SB (STANDARD BLACK)	CWC0112	130	(133)	A	MAP30105	ST Black (PC30020)	MAP44002 ROUND SLEEVE	MAP58006
7	MAF94164	C1	REDANG SNAP IN SB (ANTHRACITE COLOR)	CWC0112	130	(133)	A	MAP30105	Anthracite (PC30287)	NIL	MAP58006
8	MAF94177	C1	REDANG SNAP IN SB (STANDARD BLACK)	CWC0112	130	(133)	A	MAP30105	ST Black (PC30020)	NIL	MAP58006
9	MAF94225	C1	REDANG WLAN ANTENNA	CWC0076	35	N/A	C	MAP30105	ST Black (PC30020)	MAP44015 HEXAGON SLEEVE	NIL
10	MAF94385	C1	REDANG DIPOLE SNAP-IN (IPEX)	CWC0031	100.0	N/A	A	MAP30105	ST Black (PC30020)	NIL	NIL
11	MAF94386	C1	REDANG SNAP IN SINGLE BAND	CWC0031	280.0	N/A	A	MAP30105	ST Black (PC30020)	MAP44002 ROUND SLEEVE	NIL
12	MAF94402	C1	REDANG SNAP IN SB (GREY)	CWC0270	100.0	NA	A	MAP30105	DK Gray (PC30277)	NIL	NIL
13	MAF94403	C1	REDANG WLAN ANTENNA	CWC0270	200.0	N/A	C	MAP30105	ST Black (PC30020)	MAP44002 ROUND SLEEVE	NIL
14	MAF94404	C1	REDANG WLAN ANTENNA	CWC0270	600.0	N/A	C	MAP30105	ST Black (PC30020)	MAP44002 ROUND SLEEVE	NIL
15	MAF94436	C1	REDANG SNAP IN SINGLE BAND	CWC0031	280.0	N/A	A	MAP30105	ST Black (PC30020)	NIL	NIL

(F06) NOTE: 1. ALL COAX CABLE IS  $\varnothing$ 1.13 UNLESS SPECIFIED  
2. DK GRAY IS BASED ON PANTONE COOL GRAY 9

TOLERANCE (UNLESS STATED)	X = ±0.3	SYM	ECO/DESCRIPTION	DATE	CK	APP	 ANTENNA SBU PENANG, MALAYSIA	DRAWN BY: TL KHOO		
	XX = ±0.13							CHECKED BY: GJ CHIN		
<ul style="list-style-type: none"> <li>PRODUCT &amp; PROCESS MUST COMPLY TO LT-GES</li> <li>MISSING INFORMATION REFER TO 3D DATA</li> <li>DIMENSIONS ARE IN MILLIMETERS UNLESS STATED OTHERWISE</li> <li>THIS DRAWING WAS GENERATED VIA PRO/ENGINEER</li> <li>PRINT NOT TO SCALE</li> </ul>			<div style="border: 2px solid green; border-radius: 10px; padding: 10px; display: inline-block;"> <b>APPROVED</b> </div>	<small>CONFIDENTIAL</small> THE INFORMATION CONTAINED IN THIS DOCUMENT IS OF PROPRIETARY NATURE. IT MAY NOT BE REPRODUCED OR USED WITHOUT EXPRESS WRITTEN PERMISSION OF LAIRD TECHNOLOGIES, ANTENNA SBU			DWG. NO. : MAF95102	PG. 2/4	REV F10	
DESCRIPTION: REDANG SNAP IN MASTER PRINT, WRR SERIES				MATERIAL: N/A		© 2007 LAIRD TECHNOLOGIES	PROJECT NO. R.TBL	DATE: 08/10/07	SCALE:	UNITS: MM